



HOPPE

HEMATOLOGY & ONCOLOGY PHYSICIANS
— PROMOTING EXCELLENCE —



**Inspired by legacy. Driven by scientific excellence.
Committed to service.**

Who We Are

HOPPE is a U.S. based 501(c)(3) nonprofit organization spearheaded by American Hematology and Oncology physicians with Pakistani roots, dedicated to advancing excellence in cancer care through education, research, mentorship, and global collaboration.



www.hoppenetwork.org

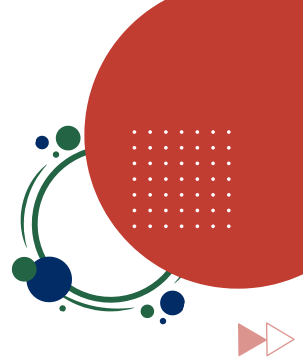


contact@hoppenetwork.org



Who We Are

HOPPE is a U.S.-based 501(c)(3) nonprofit organization spearheaded by American Hematology and Oncology physicians with Pakistani roots, dedicated to advancing excellence in cancer care through education, research, mentorship, and global collaboration.



About Founder



Khurram Tariq, MD, FACP

Founder & Chair, HOPPE

Dr. Khurram Tariq, MD, FACP, is a distinguished leader in oncology and global health. He is the Founder and Chair of HOPPE and currently serves as a member of the ABIM Hematology Item-Writing Task Force, contributing his expertise to national board examinations.

Dr. Tariq's career is marked by significant leadership roles, including previously serving as the Director of the Oncology Service Line and Director of the Research Department at UNC Health Appalachian, as well as a Research Professor at Appalachian State University.

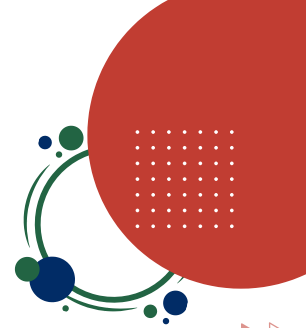
His contributions to medicine have earned him international acclaim, most recently receiving the 2025 Global Collaboration Award from the Federal Minister of Health, Government of Pakistan, and the 2025 University of Florida Distinguished Alumni Award. A former recipient of the UNC Chancellor's Award and the Francis Phillips Global Travel Scholarship, Dr. Tariq is currently authoring his highly anticipated book, *How My Patients Healed Me*.





Who We Are

HOPPE is a U.S.-based 501(c)(3) nonprofit organization spearheaded by American Hematology and Oncology physicians with Pakistani roots, dedicated to advancing excellence in cancer care through education, research, mentorship, and global collaboration.



Dear Medical Affairs Leadership,

I am writing on behalf of HOPPE, a U.S.-based, IRS-recognized 501(c)(3) nonprofit organization dedicated to advancing global excellence in cancer care, scientific collaboration, medical education, and professional development.

HOPPE represents a rapidly growing community of approximately 550 oncology physicians, including medical oncologists, hematologists, surgical oncologists, radiation oncologists, pathologists, and allied oncology specialists. Our membership includes several distinguished U.S.-based hematology and oncology leaders—some of whom played a pivotal role in bringing the American Society of Hematology (ASH) to South Asia for the first time in its history. Through our expanding global partnerships, HOPPE maintains strong collaborative relationships with professionals across North America and internationally, reflecting deep engagement within the global hematology oncology community.

HOPPE was founded to address a critical unmet need: the absence of a nationally organized, minority-led, professionally rigorous oncology platform that unites clinicians, researchers, trainees, and allied professionals. Our mission is rooted in scientific excellence, leadership development, equity, and meaningful representation within the broader local, regional, and global oncology ecosystem.

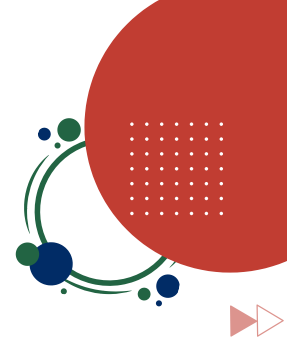
About Conference:

From **April 10–12, 2026**, HOPPE will host its inaugural **Scientific Conference in Houston, Texas**—a landmark gathering designed to bring together leading hematology-oncology experts, emerging clinicians, and global partners for evidence-based education and community building. The conference will include high-impact scientific sessions and keynote lectures from distinguished leaders such as:





HOPPE is a U.S.-based 501(c)(3) nonprofit organization spearheaded by American Hematology and Oncology physicians with Pakistani roots, dedicated to advancing excellence in cancer care through education, research, mentorship, and global collaboration.



These experts will be joined by additional national and international faculty delivering contemporary updates across hematology and medical oncology, along with mentorship and leadership development program designed to support physician well-being and sustained professional engagement.

The conference will feature:

- 1 High-impact scientific sessions and keynote lectures by nationally recognized leaders
- 2 Professional development and leadership programming delivered by renowned faculty
- 3 Family-friendly, community-oriented activities that support work-life balance
- 4 Opportunities for local, national, and international hematology & oncology collaboration

To ensure broad accessibility—particularly for trainees, early-career clinicians, and underrepresented groups—we are seeking mission-aligned educational partners committed to advancing cancer care and supporting the next generation of oncology leaders.

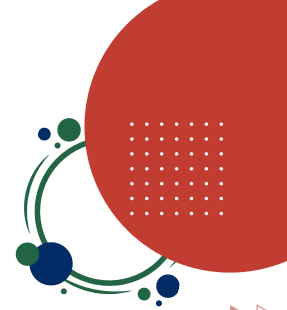
Sponsorship support will directly contribute to several HOPPE initiated programs, including but not limited to:

- High-quality scientific program
- Travel grants and trainee scholarships
- Continuing Medical Education (CME) infrastructure
- Conference logistics and technology
- Community outreach and global oncology initiatives





HOPPE is a U.S.-based 501(c)(3) nonprofit organization spearheaded by American Hematology and Oncology physicians with Pakistani roots, dedicated to advancing excellence in cancer care through education, research, mentorship, and global collaboration.



In recognition of partnership, HOPPE offers a structured set of compliant, tiered sponsorship benefits—including brand visibility, exhibit opportunities, digital promotion, and meaningful engagement with oncology professionals across North America. We would be honored to align your organization with this mission driven and high impact initiative.

We welcome the opportunity to discuss sponsorship options and explore a long-term, strategic partnership. Thank you for your continued commitment to advancing cancer care.

Sincerely,

Khurram Tariq, MD, FACP
Founder & Chair, HOPPE

Kaisar Pathan, MD, MBA
Sponsorship & Strategic
Partnerships Lead

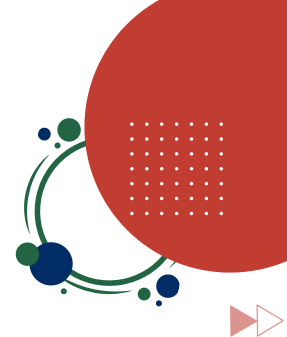
Tentative Sessions Include:

- Cancer center economics and practice sustainability
- AML, MDS, myelofibrosis, and multiple myeloma: practical community-based updates
- Breast cancer (early-stage and metastatic), GI malignancies, and metastatic melanoma
- Role of NGS, MRD, and ctDNA, Advanced therapies in hematologic malignancies: bispecifics, CAR-T, and gene therapy
- Medicare/Medicaid and policy changes impacting patient care and access
- Establishing and scaling a private practice
- A physician's personal journey through cancer





HOPPE is a U.S.-based 501(c)(3) nonprofit organization spearheaded by American Hematology and Oncology physicians with Pakistani roots, dedicated to advancing excellence in cancer care through education, research, mentorship, and global collaboration.



Host Committee

Khurram Tariq, MD, FACP

Founder & Chair, HOPPE

Bilal Farooqi, MD

Assistant Professor, Department of Medicine at the New York Medical College (NYMC), School of Medicine.

Medical Director of Hematology/Oncology at Good Samaritan Hospital (part of Westchester Medical Center Health Network).

Hira Shaikh, MD

Clinical Assistant Professor of Internal Medicine-Hematology, Oncology, and Blood and Marrow Transplantation, UI Health Care Clinical Cancer Center.

Fauzia Rana, MD

Professor of Medicine
Former Program Chair,
Department of Oncology,
University of Florida
Founder of Multiple Cancer Centers, including the internationally renowned SKMC.

Aamir Ehsan, MD

CEO & Medical Director,
CorePath Laboratories

Kaiser Pathan, MD

Physician-Executive & Global Medical Affairs Leader.
Chief Operating Officer
BioQode, CEO of Family Office.

Sumaira Shafi, MD

Hematologist and
Oncologist at Kelsey-
Seybold Clinic

Sairah Ahmed, M.D.

Associate Professor, Department of Lymphoma/Myeloma, Division of Cancer Medicine, The University of Texas MD Anderson Cancer Center, Houston, TX

Gulrayz Ahmed, MD

Assistant Professor of Medicine
Hematology/Oncology
Medical College of Wisconsin
Milwaukee, WI

Faisal Salman, MD

Hematologist, Oncologist at
the OU Health Stephenson
Cancer Center in Oklahoma
City.

Kiran Naqvi, MD

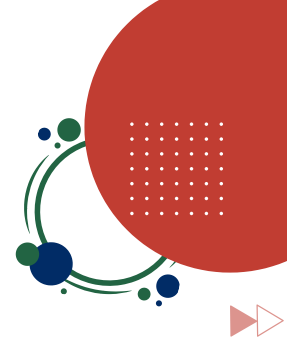
Associate Professor – Division of
Hematology-Oncology,
Department of Medicine, UC Irvine
School of Medicine

Hassan Kaleem, MD

Hematologist Oncologist
Oklahoma Cancer and Blood Specialists
Tulsa, Oklahoma
Chairperson, Multiple International
Hematology & Oncology Conferences



HOPPE is a U.S.-based 501(c)(3) nonprofit organization spearheaded by American Hematology and Oncology physicians with Pakistani roots, dedicated to advancing excellence in cancer care through education, research, mentorship, and global collaboration.



Houston Liaison Committee

Muzaffar H. Qazilbash, MD

Professor, Department of Stem Cell Transplantation, Division of Cancer Medicine; Director, Myeloma Transplantation and Cellular Therapy, Department of Stem Cell Transplantation; Co-Director, Stem Cell Transplantation Fellowship Program, Department of Stem Cell Transplantation, The University of Texas MD Anderson Cancer Center, Houston, TX

Muhammad Asim Khalil, MD

Hematologist and Medical oncologist, Baptist Hospital of Southeast Texas. Beaumont, TX Assistant Professor, Department of Internal Medicine, University of Arkansas for Medical Sciences (UAMS)

Muhammad Naqvi, MD

Hematologist & Oncologist Texas.

Sairah Ahmed, M.D.

Associate Professor, Department of Lymphoma/Myeloma, Division of Cancer Medicine, The University of Texas MD Anderson Cancer Center, Houston, TX

Qaiser Bashir, MD

Professor, Department of Stem Cell Transplantation, Division of Cancer Medicine; FACT Immune Effector Cell Inspector; Fellowship Program Director, Department of Stem Cell Transplantation, The University of Texas MD Anderson Cancer Center, Houston, TX

M. Bilal Abid MD

Medical Director, Blood and Marrow Transplantation & Cellular Therapy, Texas Tech University Health Sciences Center.

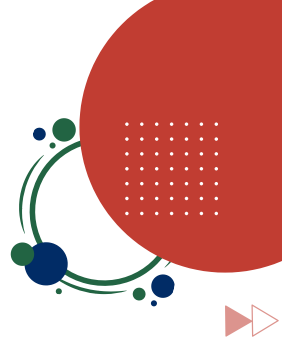
Kashif H. Ansari, MD

Hematology & Medical Oncology Physician, Baytown, TX

Sumaira Shafi, MD

Hematologist and Oncologist at Kelsey-Seybold Clinic





Distinguished Guests



Muzaffar H. Qazilbash, MD

Director, Myeloma Transplantation and Cellular Therapy; Co-Director, Stem Cell Transplantation Fellowship Program, The University of Texas MD Anderson Cancer Center, Houston, TX



Saad Usmani, MD

Chair, Multiple Myeloma Program, Memorial Sloan Kettering Cancer Center



Qaiser Bashir, MD

Fellowship Program Director, FACT Immune Effector Cell Inspector, Department of Stem Cell Transplantation, The University of Texas MD Anderson Cancer Center, Houston, TX



Sairah Ahmed, MD

Director, CAR T Program, MD Anderson Cancer Center.



Aamir Ehsan, MD

CEO & Medical Director, CorePath Laboratories



Fauzia Rana, MD

Former Program Chair, Department of Oncology, University of Florida. Founder of Multiple Cancer Centers, including the internationally renowned SKMC.



Kaiser Pathan, MD

Physician-Executive & Global Medical Affairs Leader. Chief Operating Officer BioCode, CEO of Family Office.



Syed F. Zafar, MD

Founding Partner, Florida Cancer Specialists



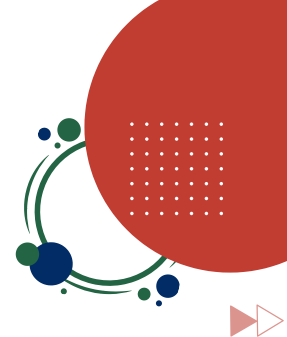
Salman Fazal, MD

Director, Cell Transplantation, AHN Cancer Institute. Assistant Professor, Temple University School of Medicine.



Tanya Siddiqi, MD

Medical Director, Lymphoma, City of Hope Orange County Director, Chronic Lymphocytic Leukemia Program, Toni Stephenson Lymphoma Center

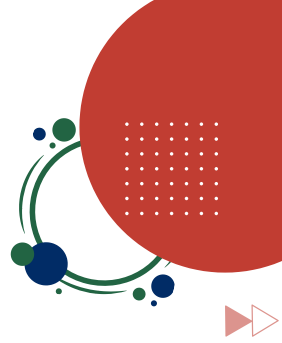


Executive Sponsorship Summary

| Tier | Investment | Recognition Level | On-Site Presence | Complimentary Registrations |
|---|------------|---|--------------------------|-----------------------------|
| Founding / Presenting | \$75,000 | Highest-level recognition; presenting partner | 2 premium exhibit tables | 4 |
| Partner | \$30,000 | Top-tier recognition | 1 premium exhibit table | 2 |
| Sponsor | \$20,000 | Primary sponsor recognition | 1 standard exhibit table | 2 |
| Supporting Sponsor | \$10,000 | Supporting-level recognition | 1 standard exhibit table | 2 |
| Mission Sponsor | \$5,000 | Mission-aligned recognition | 1 standard exhibit table | 1 |
| Exhibitor / Table <small>Scheduled Physician Networking Rounds</small> | \$4,000 | Exhibitor-level recognition | 1 table | Up to 2 reps |

All sponsorship recognition is non-educational and fully compliant with CME standards. Sponsors do not influence educational content or faculty selection.

Please note that these sponsorship tiers are tentative and subject to change as we finalize event logistics and partnership opportunities.



Detailed Sponsor Benefits



Founding / Presenting Partner – \$75,000

- Highest-level recognition across all conference materials and website.
- Two premium exhibit tables.
- Conference-wide presenting acknowledgment.
- Sponsored inauguration session with dinner; optional welcome remarks.
- Four complimentary registrations.
- Optional 20-minute product discussion during inauguration.
- Most prominent logo placement across all platforms.
- Recognition as a founding supporter of physician education and oncology capacity-building.
- Logo included on conference memorabilia.



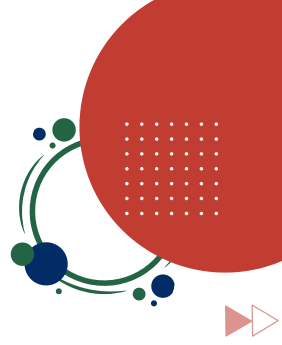
Partner – \$30,000

- Top-tier logo placement in conference hall and digital/print programs.
- One premium exhibit table.
- Sponsored meals with optional 15-minute product discussion.
- Two complimentary registrations.
- Enhanced on-site and digital recognition.
- Option to sponsor memorabilia for an additional cost.



Sponsor – \$20,000

- Prominent sponsor recognition.
- One standard exhibit table.
- Two complimentary registrations.
- Print, digital program, and social media acknowledgment.
- Optional sponsored meals with a 10-minute product discussion slot.
- Option to sponsor memorabilia for an additional cost.



Supporting Sponsor – \$10,000

- Supporting-level recognition.
- One standard exhibit table.
- Two complimentary registrations.
- Print, digital program, and social media acknowledgment.
- Option to sponsor memorabilia for an additional cost.



Mission Sponsor – \$5,000

- Mission-aligned recognition.
- One standard exhibit table.
- One complimentary registration.
- Print, digital program, and social media acknowledgment.



Exhibitor / Table – \$4,000

- One exhibit table with up to two representatives.
- Listing in conference program and social media.
- Option to sponsor memorabilia for an additional cost.
- Scheduled Physician Networking Rounds.

Sponsorship space is limited and will be confirmed on a first-come, first-served basis.

Request for Taxpayer Identification Number and Certification

Go to www.irs.gov/FormW9 for instructions and the latest information.

**Give form to the
requester. Do not
send to the IRS.**

Before you begin. For guidance related to the purpose of Form W-9, see *Purpose of Form*, below.

| | | |
|--|--|--|
| Print or type. See Specific Instructions on page 3. | <p>1 Name of entity/individual. An entry is required. (For a sole proprietor or disregarded entity, enter the owner's name on line 1, and enter the business/disregarded entity's name on line 2.)</p> <p>HOPPE WITH HELPING HANDS</p> <p>2 Business name/disregarded entity name, if different from above.</p> <p>HEMATOLOGY HELPING HANDS INC</p> <p>3a Check the appropriate box for federal tax classification of the entity/individual whose name is entered on line 1. Check only one of the following seven boxes.</p> <p><input type="checkbox"/> Individual/sole proprietor <input type="checkbox"/> C corporation <input type="checkbox"/> S corporation <input type="checkbox"/> Partnership <input type="checkbox"/> Trust/estate</p> <p><input type="checkbox"/> LLC. Enter the tax classification (C = C corporation, S = S corporation, P = Partnership)</p> <p>Note: Check the "LLC" box above and, in the entry space, enter the appropriate code (C, S, or P) for the tax classification of the LLC, unless it is a disregarded entity. A disregarded entity should instead check the appropriate box for the tax classification of its owner.</p> <p><input checked="" type="checkbox"/> Other (see instructions) <u>non-profit</u></p> <p>3b If on line 3a you checked "Partnership" or "Trust/estate," or checked "LLC" and entered "P" as its tax classification, and you are providing this form to a partnership, trust, or estate in which you have an ownership interest, check this box if you have any foreign partners, owners, or beneficiaries. See instructions <input type="checkbox"/></p> | <p>4 Exemptions (codes apply only to certain entities, not individuals; see instructions on page 3):</p> <p>Exempt payee code (if any) _____</p> <p>Exemption from Foreign Account Tax Compliance Act (FATCA) reporting code (if any) _____</p> <p style="text-align: center;"><i>(Applies to accounts maintained outside the United States.)</i></p> |
| | <p>5 Address (number, street, and apt. or suite no.). See instructions.</p> <p>104 Duckhead Pt</p> <p>6 City, state, and ZIP code</p> <p>Cary, NC 27518</p> <p>7 List account number(s) here (optional)</p> | <p>Requester's name and address (optional)</p> |

Part I Taxpayer Identification Number (TIN)

Enter your TIN in the appropriate box. The TIN provided must match the name given on line 1 to avoid backup withholding. For individuals, this is generally your social security number (SSN). However, for a resident alien, sole proprietor, or disregarded entity, see the instructions for Part I, later. For other entities, it is your employer identification number (EIN). If you do not have a number, see *How to get a TIN*, later.

| | |
|---|--|
| Social security number | |
| [] [] [] - [] [] - [] [] [] [] [] [] | |
| or | |
| Employer identification number | |
| 8 7 - 3 9 9 5 7 3 3 | |

Note: If the account is in more than one name, see the instructions for line 1. See also *What Name and Number To Give the Requester* for guidelines on whose number to enter.

Part II Certification

Under penalties of perjury, I certify that:

1. The number shown on this form is my correct taxpayer identification number (or I am waiting for a number to be issued to me); and
2. I am not subject to backup withholding because (a) I am exempt from backup withholding, or (b) I have not been notified by the Internal Revenue Service (IRS) that I am subject to backup withholding as a result of a failure to report all interest or dividends, or (c) the IRS has notified me that I am no longer subject to backup withholding; and
3. I am a U.S. citizen or other U.S. person (defined below); and
4. The FATCA code(s) entered on this form (if any) indicating that I am exempt from FATCA reporting is correct.

Certification instructions. You must cross out item 2 above if you have been notified by the IRS that you are currently subject to backup withholding because you have failed to report all interest and dividends on your tax return. For real estate transactions, item 2 does not apply. For mortgage interest paid, acquisition or abandonment of secured property, cancellation of debt, contributions to an individual retirement arrangement (IRA), and, generally, payments other than interest and dividends, you are not required to sign the certification, but you must provide your correct TIN. See the instructions for Part II, later.

| | | |
|------------------|---|-------------------------|
| Sign Here | Signature of U.S. person <i>K Tariq</i> | Date Feb 1, 2026 |
|------------------|---|-------------------------|

General Instructions

Section references are to the Internal Revenue Code unless otherwise noted.

Future developments. For the latest information about developments related to Form W-9 and its instructions, such as legislation enacted after they were published, go to www.irs.gov/FormW9.

What's New

Line 3a has been modified to clarify how a disregarded entity completes this line. An LLC that is a disregarded entity should check the appropriate box for the tax classification of its owner. Otherwise, it should check the "LLC" box and enter its appropriate tax classification.

New line 3b has been added to this form. A flow-through entity is required to complete this line to indicate that it has direct or indirect foreign partners, owners, or beneficiaries when it provides the Form W-9 to another flow-through entity in which it has an ownership interest. This change is intended to provide a flow-through entity with information regarding the status of its indirect foreign partners, owners, or beneficiaries, so that it can satisfy any applicable reporting requirements. For example, a partnership that has any indirect foreign partners may be required to complete Schedules K-2 and K-3. See the Partnership Instructions for Schedules K-2 and K-3 (Form 1065).

Purpose of Form

An individual or entity (Form W-9 requester) who is required to file an information return with the IRS is giving you this form because they